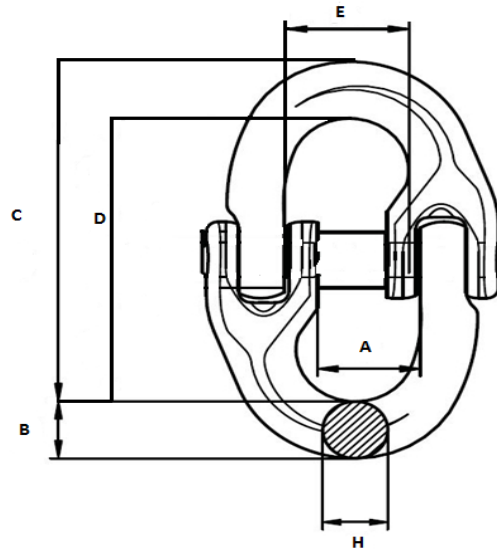


Python Component Connector



mm	W.L.L tonnes	A (mm)	B (mm)	C (mm)	D (mm)	E (mm)	Weight kgs
7mm	2	18	9.5	79.5	60.5	8.5	0.14
10mm	3.15	25	12	90.5	68	11.5	0.3
13mm	5.3	29	15	117	87	15	0.65
16mm	8	34.5	19.8	148	108.4	19.8	1.15

- Material G80 Forged super alloy steel quenched and tempered
- Standard to EN818-2
- Proof tested to 2.5 times working load limit
- Fatigue Tested to 1.5 Working load limit for 20,000 cycles
- Ultimate load is 4 times Working Load Limit
- 100% Magnaflux crack detection