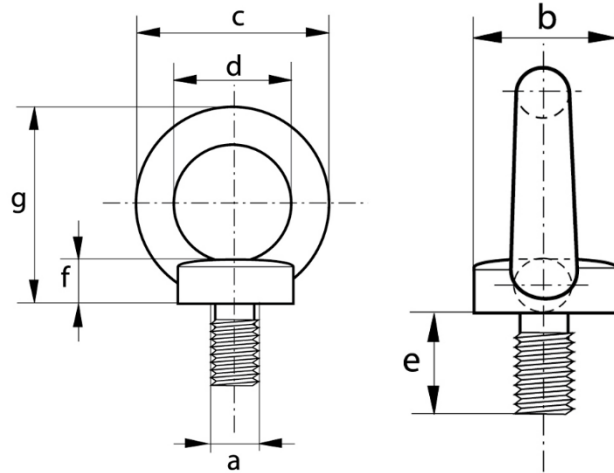


Thread Eyebolt DIN 580



W.L.L tonnes	a (mm)	b (mm)	c (mm)	d (mm)	e (mm)	f (mm)	g (mm)	Weight kgs
0.23	M10	25	45	25	17	8	45	0.1
0.34	M12	30	54	30	20.5	10	53	0.17
0.7	M16	35	63	35	27	12	62	0.28
1.2	M20	40	72	40	30	14	71	0.42
1.8	M24	50	90	50	36	18	90	0.83

- **Material** Carbon Steel.
- **Standard** Generally to DIN580
- **Finish -** Self Colour (zinc plated available upon request)
- **Certificates** As standard an EC declaration of conformity is supplied.
- **Safety factor -** 4:1